



Super Light Forged Alloy Wheel - 超轻量化锻压合金车轮

Less Weight! More Strength! More Payload! 更轻量化! 更高强度! 更多载重!

International Standards
国际标准

ISO / TS16949
ISO 9001:2008

VEHICLE
LIGHT WEIGHT
整车轻量化



PARTS
LIGHT WEIGHT
配件轻量化

Aluminum Wheel,
HUB, Knuckle
合金轮圈, 轮毂, 铰链

BODY
LIGHT WEIGHT
车体轻量化

Aluminum Frame,
Bracket, Plate
合金车架, 支架, 板材



ALUX Co., Ltd. - www.alux.co.kr

Korea (韩国-金堤)
HQ / Factory
#203-13, Heungsa-Dong,
Gimje-Si, Jeonbuk, Korea.

Korea (韩国-首尔)
Sales & Marketing
#1F, Joonin Bldg, 16-5 Yangjae-Dong,
Seocho-Gu, Seoul, Korea.

Hong Kong (香港)
Sales & Marketing
RM1501-C1, Grand Millenium Plaza
(Lower Block), 181 Queen's Road,
Central, Hong Kong.
Email : n2@novelbay.hk

China (中国-上海)
Sales & Marketing
No. 7523, Beiqing Road,
Qingpu Area, Shanghai, China.
Email : n1@novelbay.hk

* Hub 轮毂



Hub Front
前轮毂

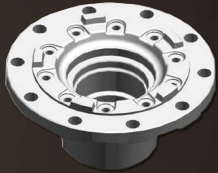


Hub Rear
后轮毂

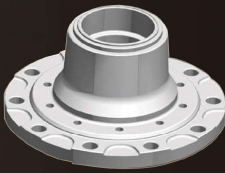


Hub Rear
后轮毂

ITEM 项目	FRONT (FF-SPINDLE) FF 前轴	REAR #1 (TN-SPINDLE) TN 后轴	REAR #2 (TP-SPINDLE) TP 后轴
Weight 重量	12.4 kg	9.75 kg	10.5 kg
Hub Rating 轮毂额定载荷	2,994 kg	5,216 kg	5,670 kg
Stud Bolt PCD 螺栓PCD	10*285.75 mm	10*285.75 mm	10*285.75 mm
Wheel Stud 车轮螺栓	M22*P1.5*122L	M22*P1.5*125L	M22*P1.5*135.7L
Hub Offset 轮毂偏距	137.4 mm	8.74 mm	36.07 mm
Axle Type 轴类型	FF	TN	TP
Cap Bolt PCD 端盖螺栓PCD	6*139.7 mm	6*139.7 mm	6*171.45 mm
Outer Cone 外侧轴承内圈	3782 mm	HM212049X	HM518445
Outer Cup 外侧轴承外圈	3720 mm	HM212011	HM518410
Inner Cone 内侧轴承内圈	HM212049	HM218248	HM518445
Inner Cup 内侧轴承外圈	HM212011	HM218210	HM518410



Hub Front (Bus)
前轮毂 (大巴)



Hub Front (Bus)
前轮毂 (大巴)



Hub Rear (Bus-5 tons)
后轮毂 (大巴-5吨)

ITEM 项目	FRONT (HF-SPINDLE) HF 前轴	REAR (AH-SPINDLE) AH 后轴
Weight 重量	12.75 kg	8.8 kg
Hub Rating 轮毂额定载荷	3,750 kg	3,670 kg
Stud Bolt PCD 螺栓PCD	10*335 mm	8*275 mm
Wheel Stud 车轮螺栓	M22*P1.5*90L	M20*P1.5*110L
Hub Offset 轮毂偏距	128.7 mm	7.5 mm
Axle Type 轴类型	HF	RR
Cap Bolt PCD 端盖螺栓PCD	Screw-Assembled 螺丝组装系统 M138*2P	
Outer Cone 外侧轴承内圈		HM212049
Outer Cup 外侧轴承外圈	F-805415	HM212011
Inner Cone 内侧轴承内圈	Unit Bearings 单元轴承	HM218248
Inner Cup 内侧轴承外圈		HM218210

* Accessory Parts 零部件



LOCATION 位置	PART NAME 名称	PART NO. & SIZE 零件编号&尺寸	
		Cone 轴承内圈	Cup 轴承外圈
Front Hub 前轮毂	Tapered Roller Bearing 圆锥滚子轴承	Inner 内侧	HM212049
		Outer 外侧	3,782 mm
Rear Hub #1 后轮毂 #1		Inner 内侧	HM218248
		Outer 外侧	HM218210
Rear Hub #2 后轮毂 #2		Inner 内侧	HM212049X
	Outer 外侧	HM212011	
Front Hub 前轮毂	Stud Bolt 双头螺栓		M22*P1.5*122L
Rear Hub #1 后轮毂 #1			M22*P1.5*125L
Rear Hub #2 后轮毂 #2			M22*P1.5*135.7L
Rear Hub #1 & #2 后轮毂 #1 & #2	ABS Ring / ABS齿圈		
	Oil Port Plug / 注油嘴		

* Heavy-Duty Truck & Trailer 重型卡车和挂车



HT2
22.5*8.25



HT2
24.5*8.25



HT5
22.5*12.25



HT5
22.5*11.75



HT5
22.5*11.75 ETO



HT13
22.5*13.00



HT1
22.5*14.00



HT4
22.5*9.00

* Bus, Light & Medium-Duty Truck 大巴, 轻型和重型卡车



HL6
22.5*8.25



HT3
19.5*6.75



LT2
17.5*6.00



LT2
17.5*5.25



AT8
22.5*7.50



HT7
19.5*7.50

SIZE 尺寸 (inch)	MODEL 型号	OFFSET 偏距 (mm)	HUB DIA. 轮壳直径 (mm)	HUB THICKNESS 幅板厚度 (mm)	BOLT HOLE PATTERN 螺栓孔 布置 (Qty*mm)	BOLT HOLE DIA. 螺栓孔 直径 (mm)	BOLT HOLE TYPE 螺栓孔 标准	MAX LOAD 最大承载 (kg)	AIR VALVE 气门嘴	WEIGHT 重量 (kg)	
16.0	6.50	LT 1601	50 (Outset)	92.3	14.5	6*139.7	19	ISO	1,215	TR414	11.2
17.5	5.25	LT 2611	115 (Outset)	150	16.5	5*208	32.5	JIS	1,710	TR543C	11.6~
		LT 2613	115 (Outset)	161	16.5	6*205	21	ISO	1,710	TR543	
		LT 2614	115 (Outset)	146	18.5	5*203.2	32.5	JIS	2,500	TR543C	
		LT 2751	135 (Outset)	164	18.5	6*222.25	32.5	JIS	1,750	TR543C	
	6.00	LT 2753	133 (Outset)	176	19	10*225	26	ISO	2,500	TR544D	12.8~
		LT 2755	133 (Outset)	161	19	6*205	26.75	ISO	2,500	TR544D	
		LT 2756	133 (Outset)	202	19	6*245	26.75	ISO	2,500	TR544D	
		LT 2757	133 (Outset)	161.2	19	6*205	21	ISO	2,500	TR544D	
		LT 2758	133 (Outset)	164	19	6*222.25	30	ISO	2,500	TR544D	
		LT 2851 H	96 (Outset)	161.2	19.5	6*205	21	ISO	2,500	V3-20-41	
		LT 2852 H	96 (Outset)	150	19.5	5*208	30	ISO	2,500	V3-20-41	
		LT 2854 K	96 (Outset)	145	19.5	5*203.2	30	ISO	2,500	V3-20-41	
LT 2855 H	96 (Outset)	164	19.5	6*222.25	30	ISO	2,500	V3-20-41			
19.5	6.75	HT 3951	140 (Outset)	221	17.5	8*275	32.5	ISO	2,500	TR545D	16.4~
		HT 3952	140 (Outset)	164	17.5	6*222.25	32.5	JIS	2,500	TR545D	
		HT 3954	140 (Outset)	221	17.5	8*275	30	ISO	2,500	TR545D	
		HT 3961	140 (Outset)	221	17.5	8*275	24	ISO	2,500	TR545H	
		HT 3962	140 (Outset)	221	17.5	8*275	24	ISO	2,500	TR545H	
	7.50	HT 3511	147 (Outset)	221	20.5	8*275	26	ISO	2,500	TR543	16.8~
		HT 7851	115 (Outset)	221	18	8*275	24	ISO	3,000	TR544D	
		HT 7852	115 (Outset)	221	18	8*275	30	ISO	3,000	TR544D	
		HT 7853	115 (Outset)	221	18	8*275	32.5	ISO	3,000	TR544D	
		HT 7951	155 (Outset)	221.1	19	8*275	26	ISO	3,000	TR543	
		HT 7952	155 (Outset)	221	19	8*275	26	ISO	3,300	TR543	
		HT 7953	155 (Outset)	221	19	8*275	24	ISO	3,000	TR543	
22.5	7.50	HT 7954	155 (Outset)	221	19	8*275	32.5	ISO	3,000	TR543	22.6~
		HT 7955	155 (Outset)	176	19	10*225	24	ISO	3,000	TR543	
		HT 7956	155 (Outset)	221	19	8*275	30	ISO	3,000	TR543	
		HT 7957	155 (Outset)	221	19	8*275	24	ISO	3,000	TR543	
		AT 8302	162 (Outset)	221	25	8*285	32.5	JIS	3,520	TR545D	
		HT 8302	162 (Outset)	214	23	8*275	32.5	ISO	3,520	TR545D	
		HT 8304	145 (Outset)	221	23	8*275	32.5	ISO	3,520	TR545D	
		HT 8601	162 (Outset)	281.2	22.5	10*335	26	ISO	3,550	TR545D	
		HT 8501	167 (Outset)	281.2	22	10*335	26	ISO	3,100	TR545D	
		HT 8511	162 (Outset)	281.2	20.5	10*335	26	ISO	3,550	TR543	
22.5	8.25	HT 8512	162 (Outset)	281.2	20.5	10*335	32.5	ISO	3,550	TR543	22.6~
		HT 8513	162 (Outset)	281.2	21.6	10*335	26	ISO	3,550	TR543	
		HT 2021	104 (Inset)	281.2	23	10*335	26	ISO	3,550	TR544D	
		HT 2022	110 (Inset)	281.2	23	10*335	32.5	ISO	3,550	TR544D	
		HT 2023	104 (Inset)	221	23	8*275	32.5	ISO	3,550	TR544D	
		HT 2226 CC	168 (Outset)	220	23	10*285.75	26	ISO	3,650	TR545D	
		HT 2228	165 (Outset)	220.1	22.5	10*285.75	26	ISO	3,550	TR545D	
		HT 2228 S CC	165 (Outset)	220.1	23	10*285.75	26	ISO	3,550	TR545D	
		HT 2230 S	167 (Outset)	281.2	23	10*335	26	ISO	3,750	TR545D	
		HT 2253	165 (Outset)	281.2	22.2	10*335	26	ISO	3,650	TR545D	
		HT 2254	165 (Outset)	281.2	22.2	10*335	32.5	ISO	3,650	TR545D	
		HT 2261	165 (Outset)	281.2	22.2	10*335	26	ISO	3,650	TR545D	
		HT 2261 S	165 (Outset)	281.2	23	10*335	26	ISO	3,650	TR545D	
		HT 2261 S CC	165 (Outset)	281.2	24	10*335	26	ISO	3,650	TR545D	
		HT 2271	165 (Outset)	281.2	22.5	10*335	26	ISO	3,650	TR545DH	
		HT 2321	165 (Outset)	281.2	22.2	10*335	26	ISO	3,650	TR545DH	
		HB 2232 S	165 (Outset)	221	23	8*285	32.5	JIS	3,650	TR545D	
		HT 2232 S	167 (Outset)	281.2	23	10*335	32.5	ISO	3,750	TR545D	
		HT 2233 S	167 (Outset)	281.2	23.5	10*335	26	ISO	4,000	TR545D	
		HT 2234 S	167 (Outset)	281.2	23.5	10*335	32.5	ISO	4,000	TR545D	
		HT 2511	165 (Outset)	281.2	21.7	10*335	26	ISO	3,650	TR543	
		HT 2512	165 (Outset)	281.2	21.7	10*335	32.5	ISO	3,650	TR543	
		HL 6212 S	169 (Outset)	220	22	10*285.75	26	ISO	3,550	TR545D	
		HL 6213 S	169 (Outset)	221	25	8*285	32.5	JIS	3,550	TR545D	
		HL 6214 S	169 (Outset)	221	22.5	8*285	26.75	ISO	3,550	TR545D	
		HL 6215 S	169 (Outset)	221	23	10*285.75	31	JIS	3,550	TR545D	
		HL 6412 S	167 (Outset)	220	22	10*285.75	26	ISO	3,550	TR545D	
		HL 6413 S	167 (Outset)	176	22	10*225	26	ISO	3,550	TR545D	
22.5	9.00	HT 4203	175 (Outset)	281.2	24	10*335	26	ISO	4,050	TR543	24.7~
		HT 4205 S	175 (Outset)	281.2	24	10*335	26	ISO	4,550	TR545D	
		HT 4206 S	175 (Outset)	281.2	24	10*335	32.5	ISO	4,550	TR545D	
		HT 4501 S	114 (Inset)	281.2	23	10*335	32.5	ISO	4,000	TR544D	
		HT 4502 S	114 (Inset)	281.2	23	10*335	26	ISO	4,000	TR545D	
		HT 4503	137 (Outset)	281.2	23	10*335	26	ISO	4,080	TR543	
		HT 4514	114 (Outset)	281.2	24	10*335	32.5	ISO	4,080	TR543	
		HT/HL 4321	175 (Outset)	281.2	24.5/23.5	10*335	32.5	ISO	4,125/4,000	TR543	
		HT 4321 S	175 (Outset)	281.2	24	10*335	32.5	ISO	4,125	TR543	
		HT/HL 4322	175 (Outset)	281.2	24.5/23.5	10*335	26	ISO	4,125/4,000	TR543	
		HT 4322 S	175 (Outset)	281.2	24	10*335	26	ISO	4,125	TR543	
		HT 4323	175 (Outset)	220.1	23.5	10*285.75	26	ISO	4,000	TR543	
		HT 4324	175 (Outset)	220.1	23.5	10*285.75	32.5	ISO	4,000	TR543	
		HT 4332	175 (Outset)	281.2	23.5	10*335	26	ISO	4,080	TR543	
		HT 4623 S	176 (Outset)	220.1	24	10*285.75	26	ISO	4,550	TR543	

SIZE 尺寸 (inch)	MODEL 型号	OFFSET 偏距 (mm)	HUB DIA. 轮毂直径 (mm)	HUB THICKNESS 辐板厚度 (mm)	BOLT HOLE PATTERN 螺栓孔 布置 (Qty*mm)	BOLT HOLE DIA. 螺栓孔 直径 (mm)	BOLT HOLE TYPE 螺栓孔 标准	MAX LOAD 最大承载 (kg)	AIR VALVE 气门嘴	WEIGHT 重量 (kg)	
22.5	11.75	HT 5203	121 (Inset)	281.2	25.3	10*335	32.5	ISO	5,000	V3-20-41	26.4~
		HT 5204 S	120 (Inset)	281.2	25.3	10*335	26	ISO	5,000	V3-20-41	
		HT 5206	120 (Inset)	281.2	25.3	10*335	26	ISO	5,000	V3-20-41	
		HT 5208	124 (Inset)	281.2	26.3	10*335	26	ISO	5,000	V3-20-41	
		HT/HL 5212	120 (Inset)	281.2	29/25.3	10*335	26	ISO	4,500	V3-20-41	
		HT 5212 S	120 (Inset)	281.2	25.3	10*335	26	ISO	5,000	V3-20-41	
		HT/HL 5213	120 (Inset)	281.2	29/25.3	10*335	32.5	ISO	4,500	V3-20-41	
		HT 5213 S	120 (Inset)	281.2	25.3	10*335	32.5	ISO	5,000	V3-20-41	
		HT 5601 S	132 (Inset)	281.2	26	10*335	26	ISO	5,000	V3-20-41	
		HT 5602 S	132 (Inset)	281.2	26	10*335	32.5	ISO	5,000	V3-20-41	
		HT 5311 S	0 (Inset)	281.2	23.5	10*335	32.5	ISO	5,000	TR553E	
		HT 5312 S	0 (Inset)	281.2	26	10*335	26	ISO	5,000	TR553E	
		HT 5313	0 (Inset)	220.1	23.5	10*285.75	26	ISO	4,500	TR553E	
		HT 5314	0 (Inset)	221	23.5	8*275	26	ISO	4,500	TR553E	
HT 5314 S	0 (Inset)	221	26	8*275	26	ISO	5,000	TR553E			
22.5	12.25	HT 5321 S	-12 (Inset)	281.2	24	10*335	26	ISO	4,750	PRV302-24	29~
		HT 5322 S	-12 (Inset)	281.2	24	10*335	32.5	ISO	4,750	PRV302-24	
		HT 5401	120 (Inset)	281.2	27	10*335	26	ISO	5,150	V3-20-41	
	HT 5402	120 (Inset)	281.2	27	10*335	32.5	ISO	5,150	V3-20-41		
	HT 5403	120 (Inset)	220	27	10*285.75	26	ISO	5,150	V3-20-41		
	14.00	HT 1302 S	-14 (Inset)	281.2	24.5	10*335	26	ISO	5,800	TR553E	
HT 1303 S		-14 (Inset)	220	24.5	10*285.75	26	ISO	5,800	TR553E	28.8	
HT 1403 S		-51 (Inset)	220	24.5	10*285.75	26	ISO	5,800	TR553E	28.8	
24.5	8.25	HT 2451 S	167 (Outset)	220.1	22.5	10*285.75	26.75	ISO	3,650	TR545D	26.2~
		HT 2452 S	167 (Outset)	220.1	22.5	10*285.75	32.5	ISO	3,650	TR545D	
		HT 2453 S	167 (Outset)	221	23.5	10*285.75	31	JIS	3,650	TR545D	

* Specification can be adjusted according to Customer's demand / 具体参数可根据客户要求调整

- MF : Machine Finish / 无抛光
- OBM : Outside Bright Mirror / 外侧面抛光
- S : Shot Peening / 喷丸处理
- IBM : Inside Bright Mirror / 内侧面抛光
- BBM : Both Side Bright Mirror / 双面抛光
- AB : ALUBRIGHT Sputting / 韩铝专利亮面处理

Quality Assurance 质量保证

An Engineer who Strives for Excellence Transform the Future 100% Made in Korea

The underlying strength of ALUX is its Technological Research and Development. It is our outpost for technological advancement and continue to boldly invest in developing new models and improving the existing products. With such R&D efforts and accrual of technological knowledge, ALUX is constantly being reinvented.

Engineering Spirit and Technology...

- High Tonnage Special Forging Machine
- Process Simplification
- Excellent Mechanical Properties Infinity of Alloy

追求卓越改变未来的工程师 100% 韩国制造

ALUX拥有强大的内部技术研究和开发能力。技术进步是我们的前哨，坚持持续投资开发新型号和改进现有产品。研发努力和技术知识增加让ALUX不断被提升。

工程精髓和科技...

- 高吨位专用锻压机
- 优化生产工艺
- 优异的合金机械极限特性

Sales & Marketing / 销售伙伴

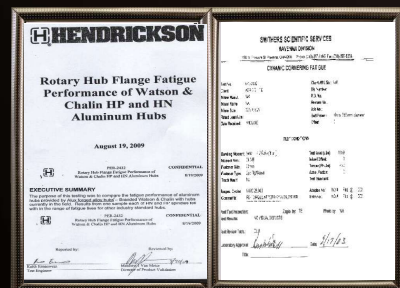


TUV
ISO 9001:2008
ISO TS16949



Fraunhofer
LBF Fatigue Test

TUV
Fatigue Test



Hendrickson
Fatigue Performance Test

Smithers Scientific
Radial Fatigue Test
Coenering Fatigue Test

INTERNATIONAL CLIENTELE 国际客户

